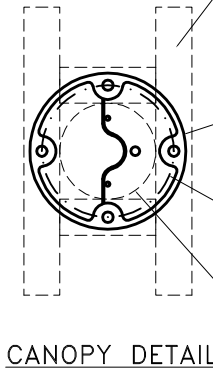
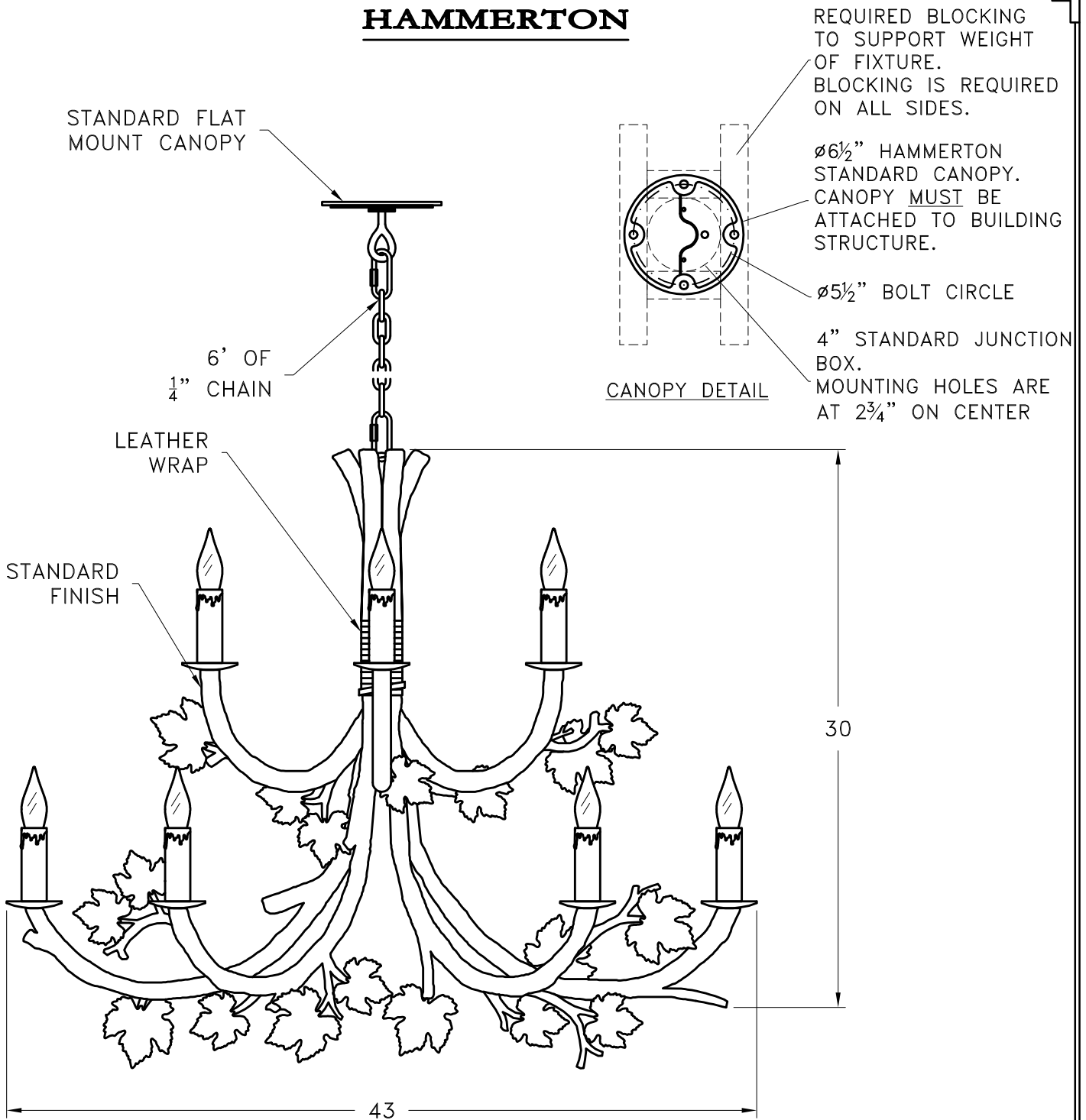


HAMMERTON



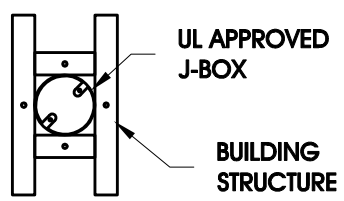
REQUIRED BLOCKING TO SUPPORT WEIGHT OF FIXTURE. BLOCKING IS REQUIRED ON ALL SIDES.

$\varnothing 6\frac{1}{2}$ " HAMMERTON STANDARD CANOPY. CANOPY MUST BE ATTACHED TO BUILDING STRUCTURE.

$\varnothing 5\frac{1}{2}$ " BOLT CIRCLE

4" STANDARD JUNCTION BOX. MOUNTING HOLES ARE AT $2\frac{3}{4}$ " ON CENTER

MOUNTING SPECIFICATION NOTES:



CAUTION
HARDWARE PACKET "A" MOUNTS DIRECTLY TO BUILDING STRUCTURE.

ELECTRICAL SPECIFICATION NOTES:



**ELECTRICAL: 9-40 WATT MAX
EDISON BASE
120v TYPICAL**

CATALOG # CH7002-MP-L

APPROXIMATE WEIGHT: 55 Lbs.

HARDWARE PACKET: A

SHADE MATERIAL : N/A

UL RATING: DRY

DIMENSION TOLERANCE $\pm 7/8$ ".

www.hammerton.com

© Copyright 2006, All rights in design, detail or invention of this drawing are reserved as the property of Hammerton. Any imitation or adaptation without written consent is strictly prohibited.