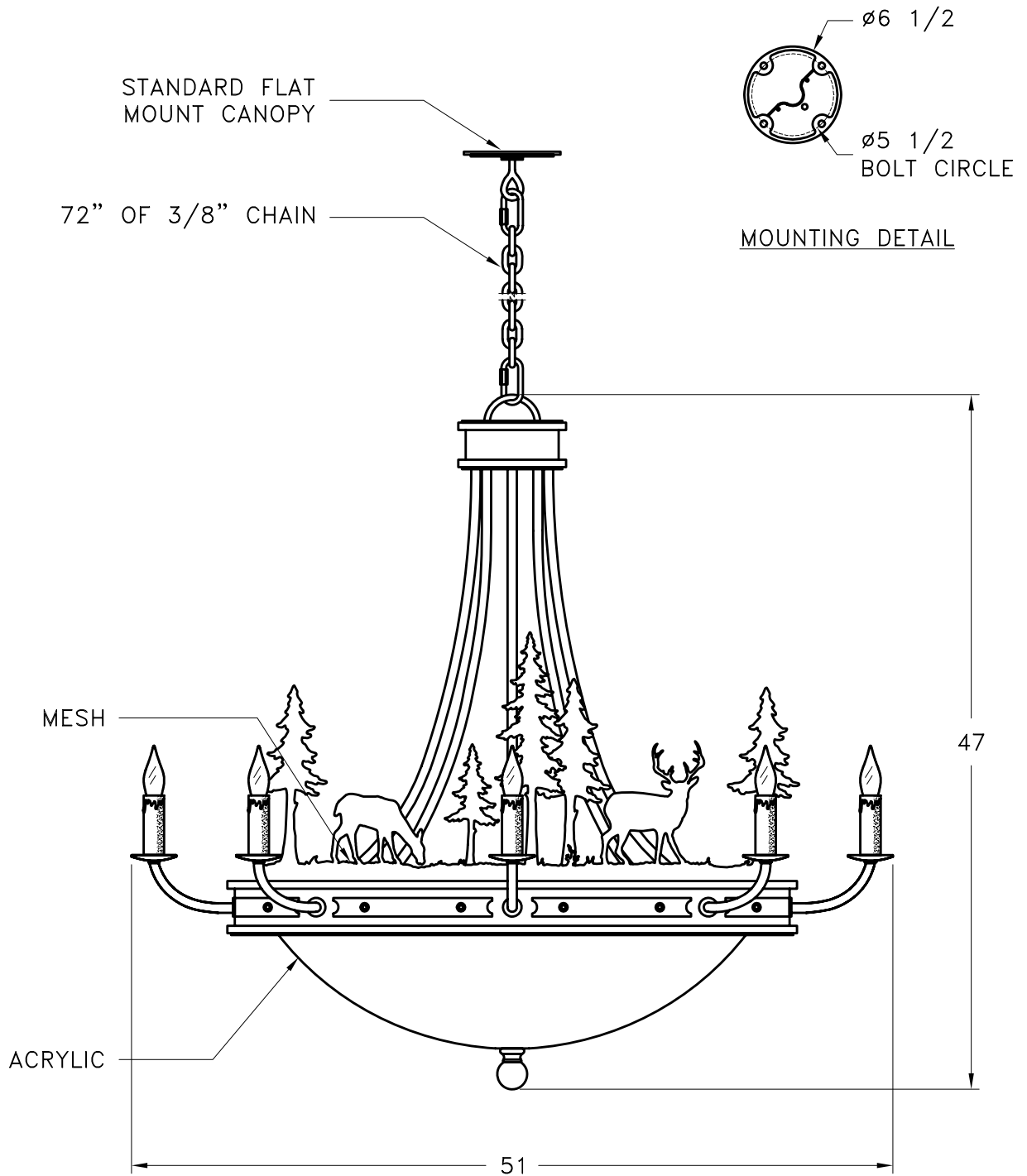
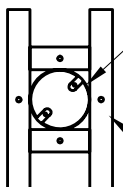


HAMMERTON



MOUNTING SPECIFICATION NOTES:



UL APPROVED
J-BOX

BUILDING
STRUCTURE

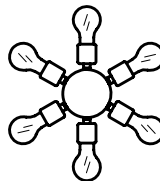
CAUTION

HARDWARE PACKET "A" MOUNTS
DIRECTLY TO BUILDING STRUCTURE.

ELECTRICAL SPECIFICATION NOTES:



ELECTRICAL:
8 - 40 WATT MAX
EDISON BASE
120v TYPICAL



ELECTRICAL:
6 - 75 WATT MAX
EDISON BASE
120v TYPICAL

Light Bulb NOT Included

CATALOG # CH6028-DR

APPROXIMATE WEIGHT: 100 Lbs.

HARDWARE PACKET: A

SHADE MATERIAL : ACRYLIC

UL RATING: DRY

DIMENSION TOLERANCE ± 7/8".

www.hammerton.com

© Copyright 2006, All rights in design, detail or invention of this drawing are reserved as the property of Hammerton. Any imitation or adaptation without written consent is strictly prohibited.